



## Villa Nirvana



Villa Nirvana is situated in Sairee Beach (near beach)

### Price Range:

3450 - 4650 Baht per night

### Resort Facilities:

Hot Shower, Internet, Refrigerator (in room), TV/UBC (in room), TV/DVD (in room), Room Safe, WiFi, Laundry Service



The stunning Villa Nirvana is located at the northern part of Sairee Beach and is only about 200 meters away from the beach, and a 5 minute walk away from Sairee village which has all the great shops, bars and restaurants, including a couple of small supermarkets. The villa is surrounded by tropical jungle and coconut plantations, which all have great views overlooking the crystal blue water of the Gulf of Siam.

Villa Nirvana sets a high standard to some of the villas and properties on Koh Tao, it offers a stylish combination of traditional Thai design, modern elegance and Eco living. The floor space covers over 90 sq. meters, the villa is fully furnished with two large air conditioned master bedrooms, a spacious living room with cable TV UBC, free Wi-Fi, DVD, stereo player, safety deposit box, a fully equipped Kitchen and a private roof covered balcony where you can sit with the drink of your choice and enjoy the most magnificent panoramic views of Sairee Beach, and don't forget the stunning sunsets we get on Koh Tao. Whether you're a couple looking for something extra for your romantic get-away, a family looking for a peaceful holiday rental away from the crowds and backpackers, or a group of dive Buddy's looking for that extra nice place to chill and relax with friends after a long day diving, you will find this is a great choice for that memorable Koh Tao holiday.

They can also organise motorbike or jeep rental so you can get out and explore this small island.

&nbsp;

The Villa Nirvana is available as a nightly, weekly or monthly rental.

Nightly rental - 4900 per night

Weekly rental - 26900 Baht per week

Monthly rental - 59000 Baht per month



### Price Seasons:

Peak Season

1.Jul - 15.Sep

High Season 2

16.Jan - 30.Apr

High Season

Low Season

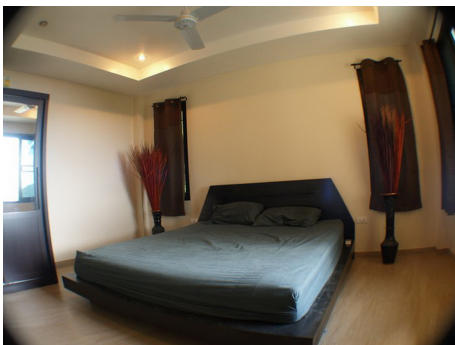
16.Sep - 14.Dec

Low Season 2

1.May - 30.Jun

### Room Types:

#### Villa Nirvana



The stunning Villa Nirvana is located at the northern part of Sairee Beach and is only about 200 meters away from the beach, and a 5 minute walk away from Sairee village which has all the great shops, bars and restaurants, including a couple of small supermarkets. The villa is surrounded by tropical jungle and coconut plantations, which all have great views overlooking the crystal blue water of the Gulf of Siam.

Villa Nirvana sets a high standard to some of the villas and properties on Koh Tao, it offers a stylish combination of traditional Thai design, modern elegance and Eco living. The floor space covers over 90 sq. meters, the villa is fully furnished with two large air conditioned master bedrooms, a spacious living room with cable TV UBC, free Wi-Fi, DVD, stereo player, safety deposit box, a fully equipped Kitchen and a private roof covered balcony where you can sit with the drink of your choice and enjoy the most magnificent panoramic views of Sairee Beach, and don't forget the stunning sunsets we get on Koh Tao. Whether you're a couple looking for something extra for your romantic get-away, a family looking for a peaceful holiday rental away from the crowds and backpackers, or a group of dive Buddy's looking for that extra nice place to chill and relax with friends after a long day diving, you will find this is a great choice for that memorable Koh Tao holiday.

They can also organise motorbike or jeep rental so you can get out and explore this small island.

&nbsp;

The Villa Nirvana is available as a nightly, weekly or monthly rental.

PEAK SEASON

Nightly rental - 4650 Baht &nbsp;per night

Weekly rental - 27500 Baht per week

Monthly rental - 76500 &nbsp;Baht per month

&nbsp;

HIGH SEASON

Nightly rental - 4150 Baht &nbsp;per night

Weekly rental - 24600 Baht per week

Monthly rental - 68500 Baht per month

&nbsp;

LOW SEASON

Nightly rental - 3450 Baht per night

Weekly rental - 20500 Baht per week

Monthly rental - 61000 Baht per month

Peak Season 4650 Baht / High Season 2 4150 Baht / High Season 4150 Baht / Low Season 3450 Baht / Low Season 2 3450 Baht